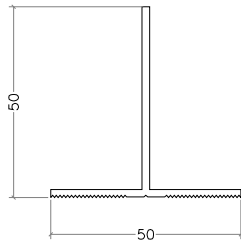




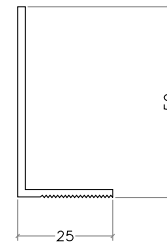
code	profile	profile features	code	profile	profile features
------	---------	------------------	------	---------	------------------



T Profile (50x50)

TP01

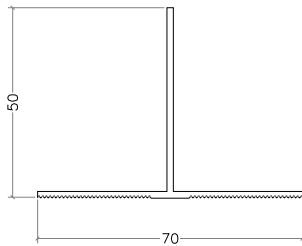
colour : ral



L Profile (25x50)

LP01

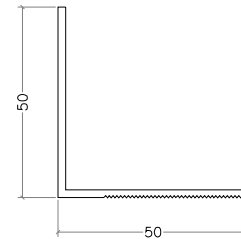
colour : ral



T Profile (70x50)

TP02

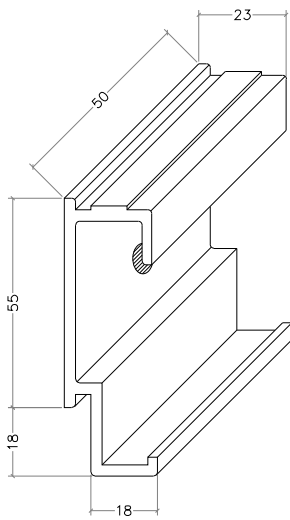
colour : ral



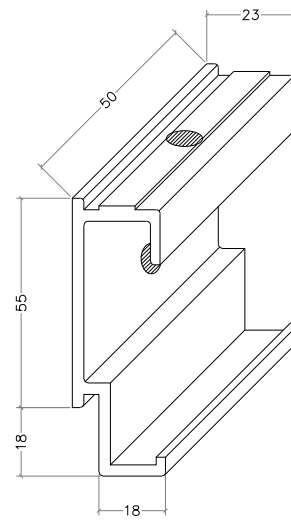
L Profile (50x50)

LP02

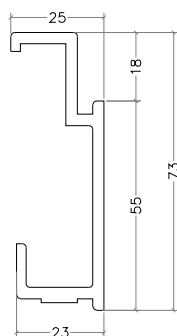
colour : ral



Bottom Clip



Top Clip



Rail Profile

3,9x19 YHB (M.U.V)



Undercut Anchor



3,9x19 YSB (M.U.V)



Adj. Screw



4,8x16 YSB (M.U.V)



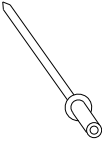
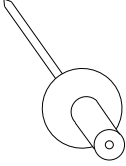

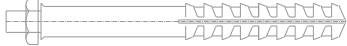



M8x10 Bolt

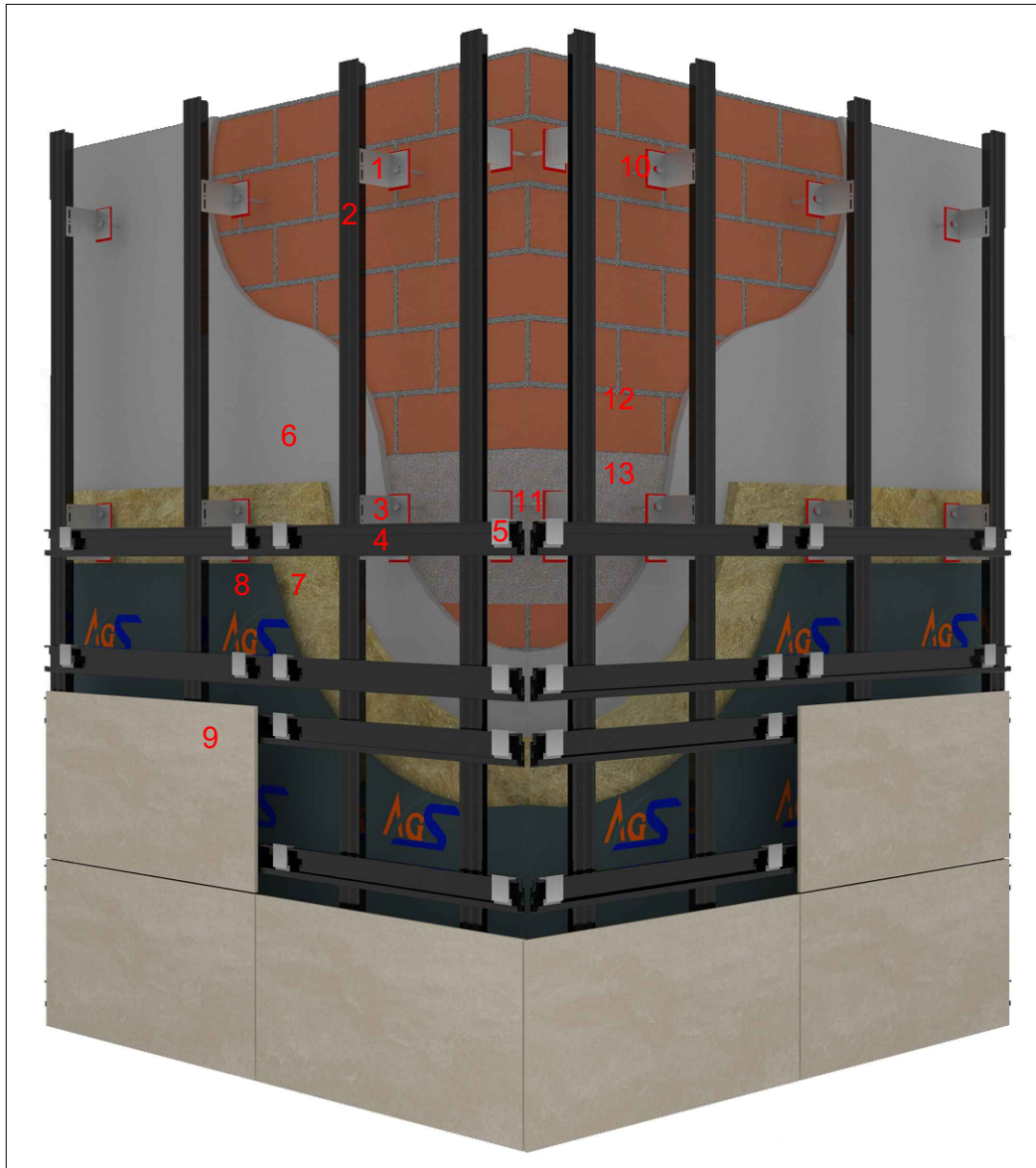


AKB 5,5x25 (M.U.V)

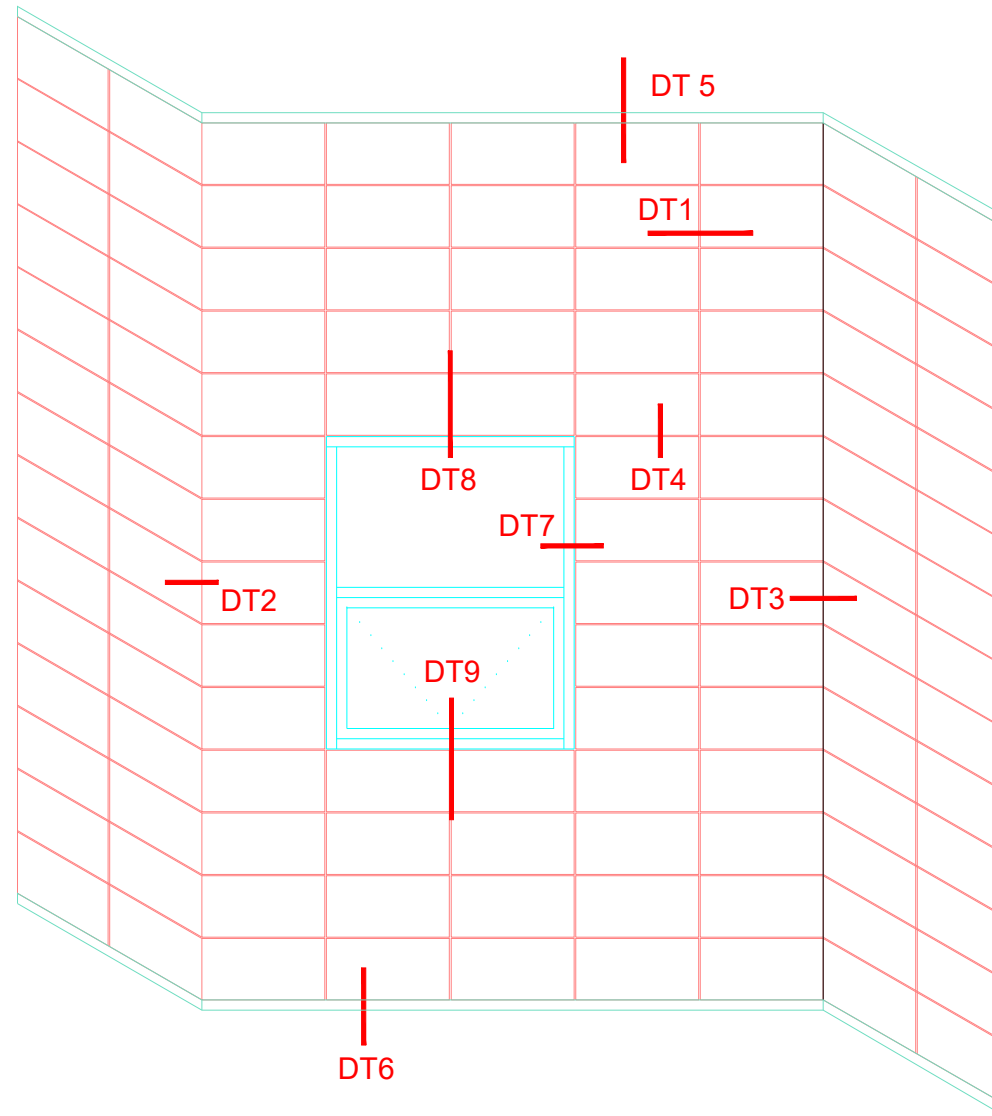


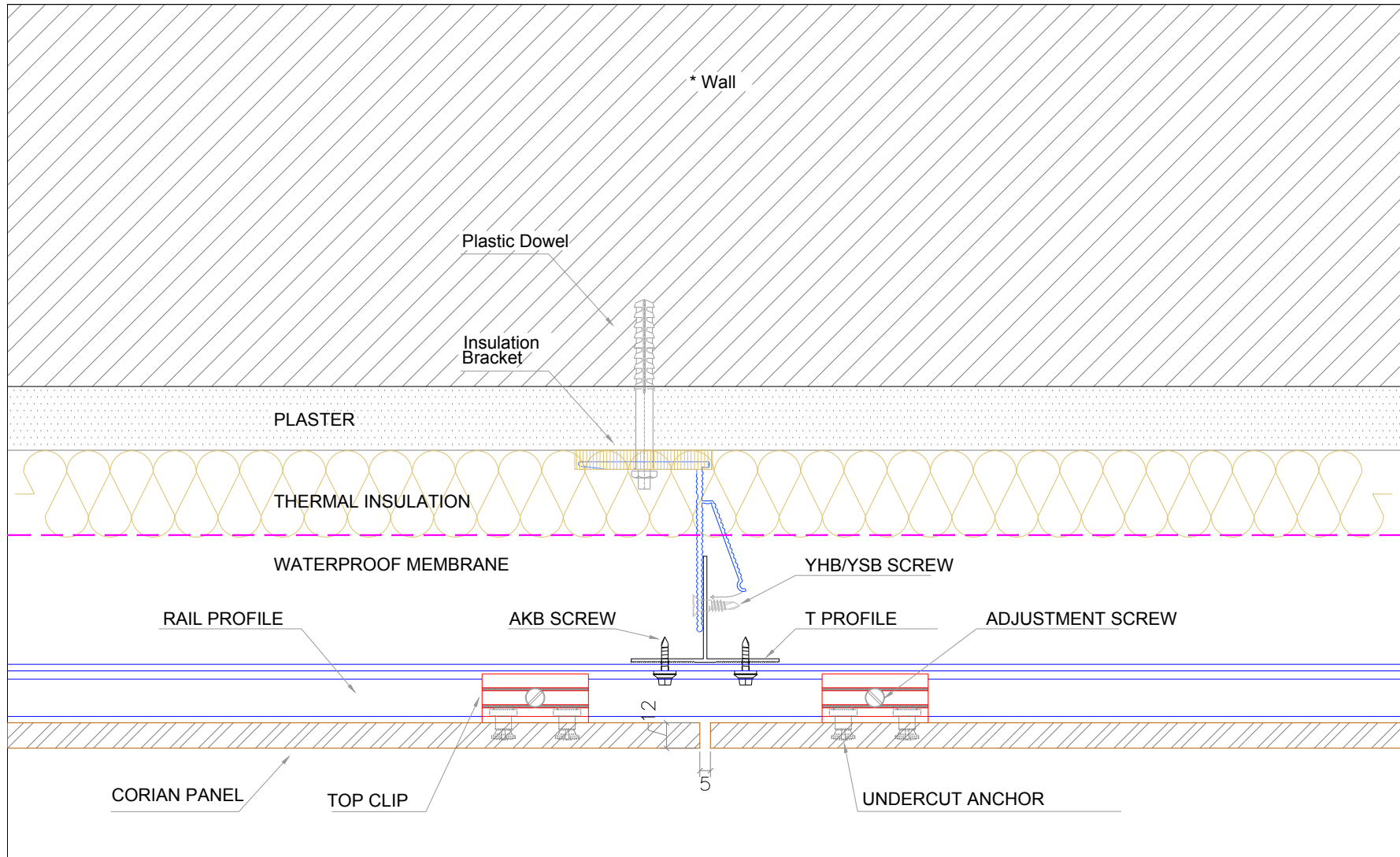


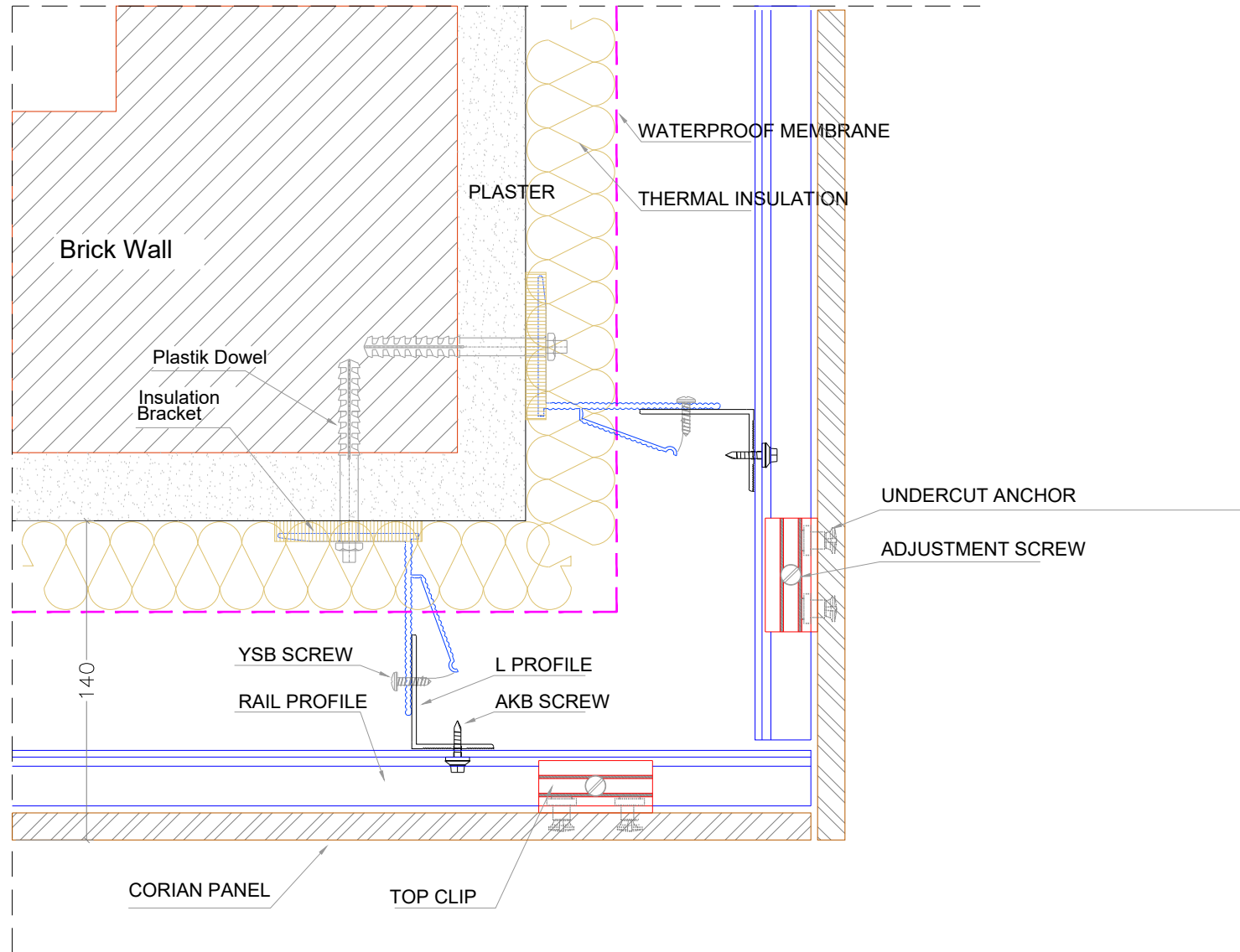
code	profile	profile features	code	profile	profile features
	 4x10 Rivet	 4,8x25 Rivet (Supply by requested RAL code)		 Steel Dowel	
				 Plastic Dowel	
	 MS Polymer Sealant			 Double Sided Tape	
	 Instant Adhesive - Glue				

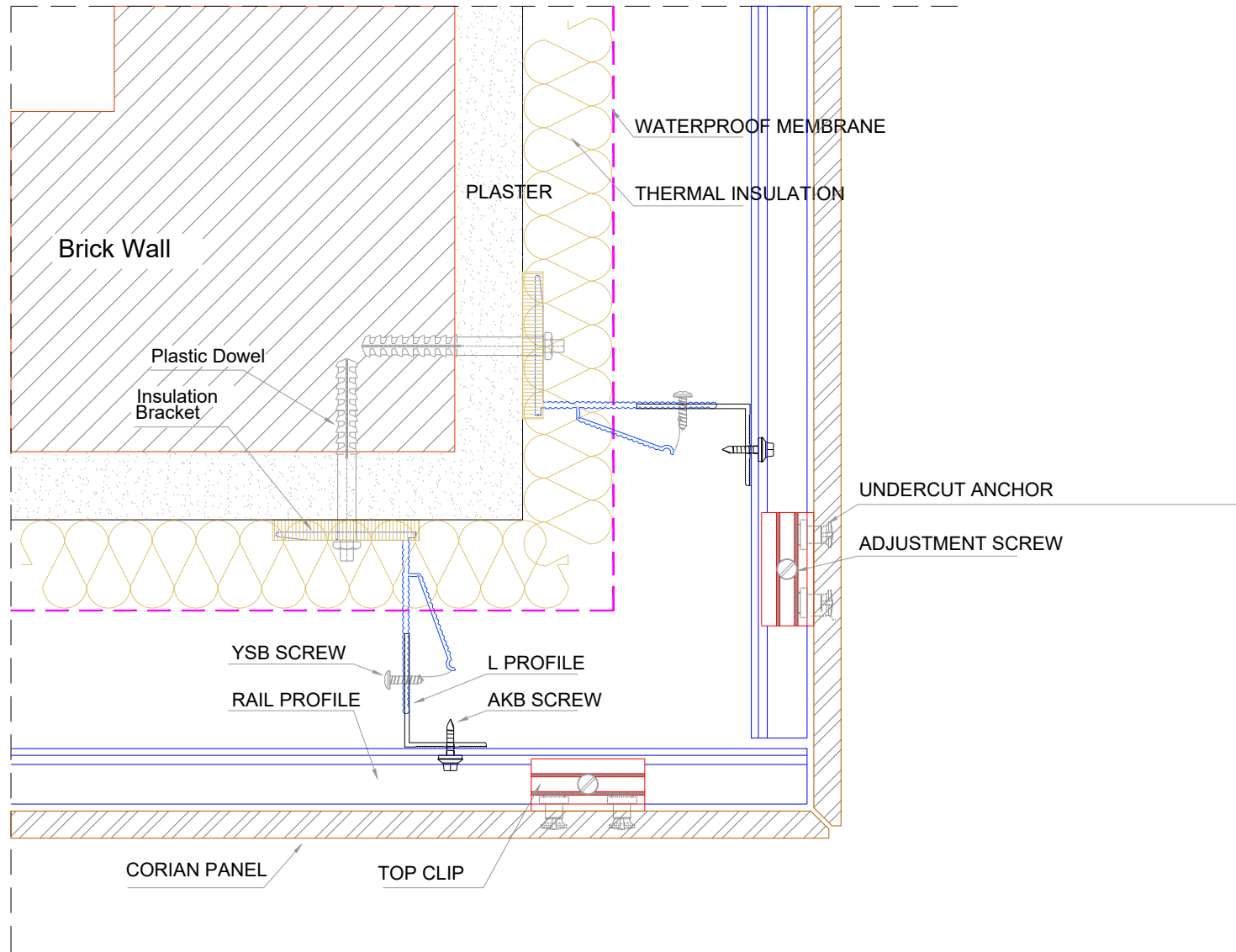


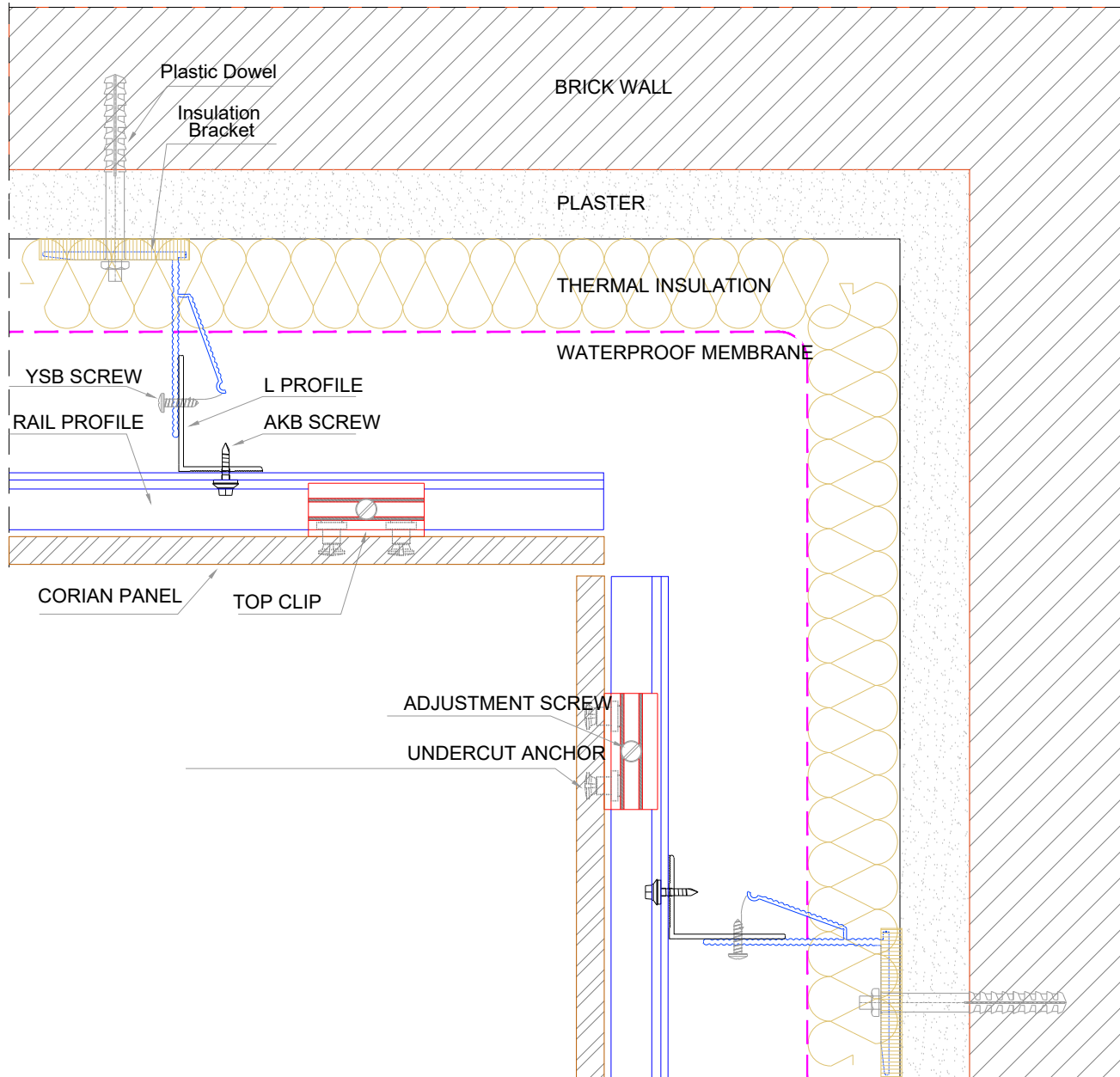
1. IZOFIX SUPPORT BRACKET
2. T PROFILE
3. IZOFIX MAIN BRACKET
4. RAIL PROFILE
5. CLIP
6. PLASTER
7. THERMAL INSULATION
8. WATERPROOF MEMBRANE
9. CORIAN PANEL
10. PLASTIC DOWEL
11. STEEL DOWEL
12. BRICK BLOCK
13. CONCRETE BEAM

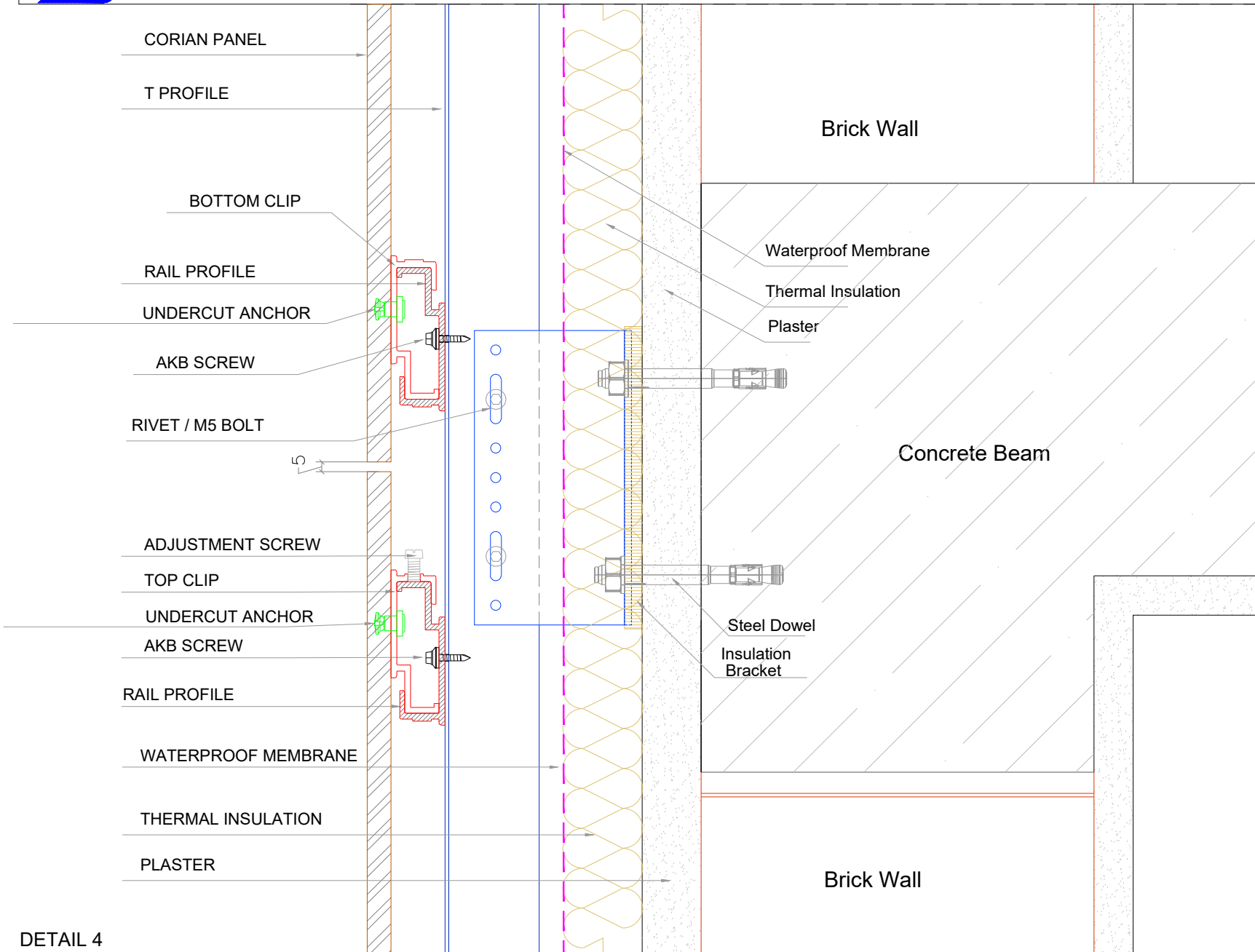




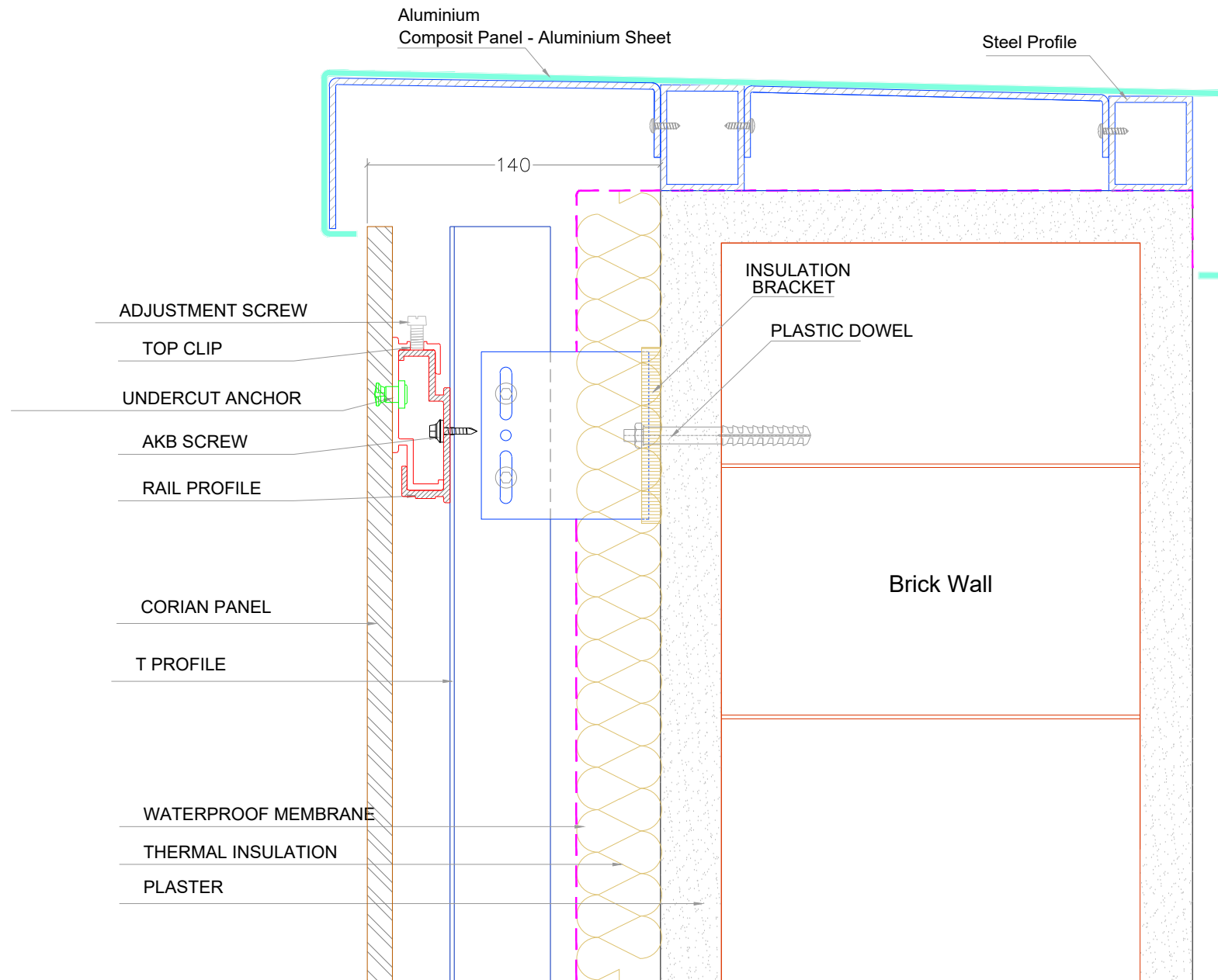




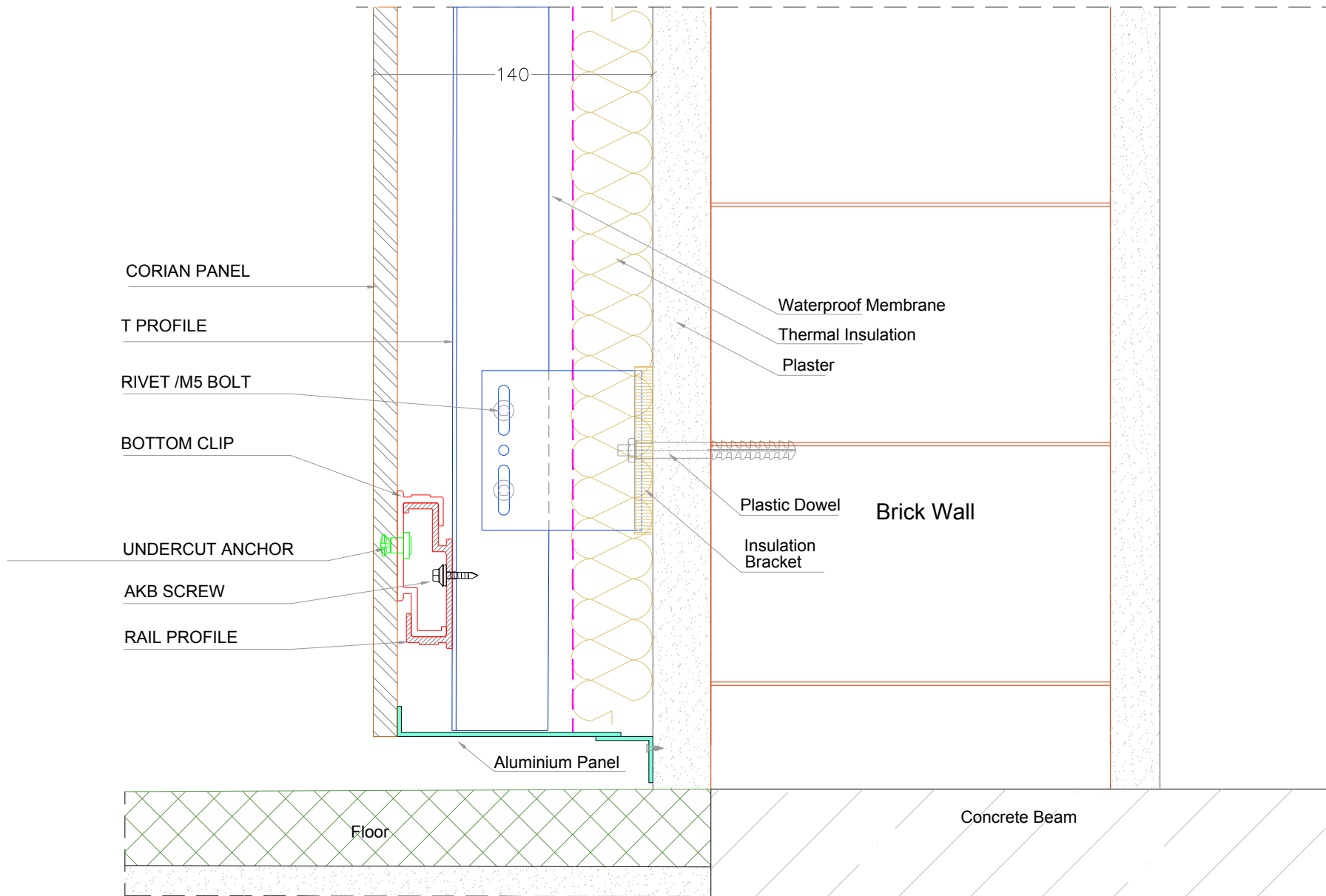


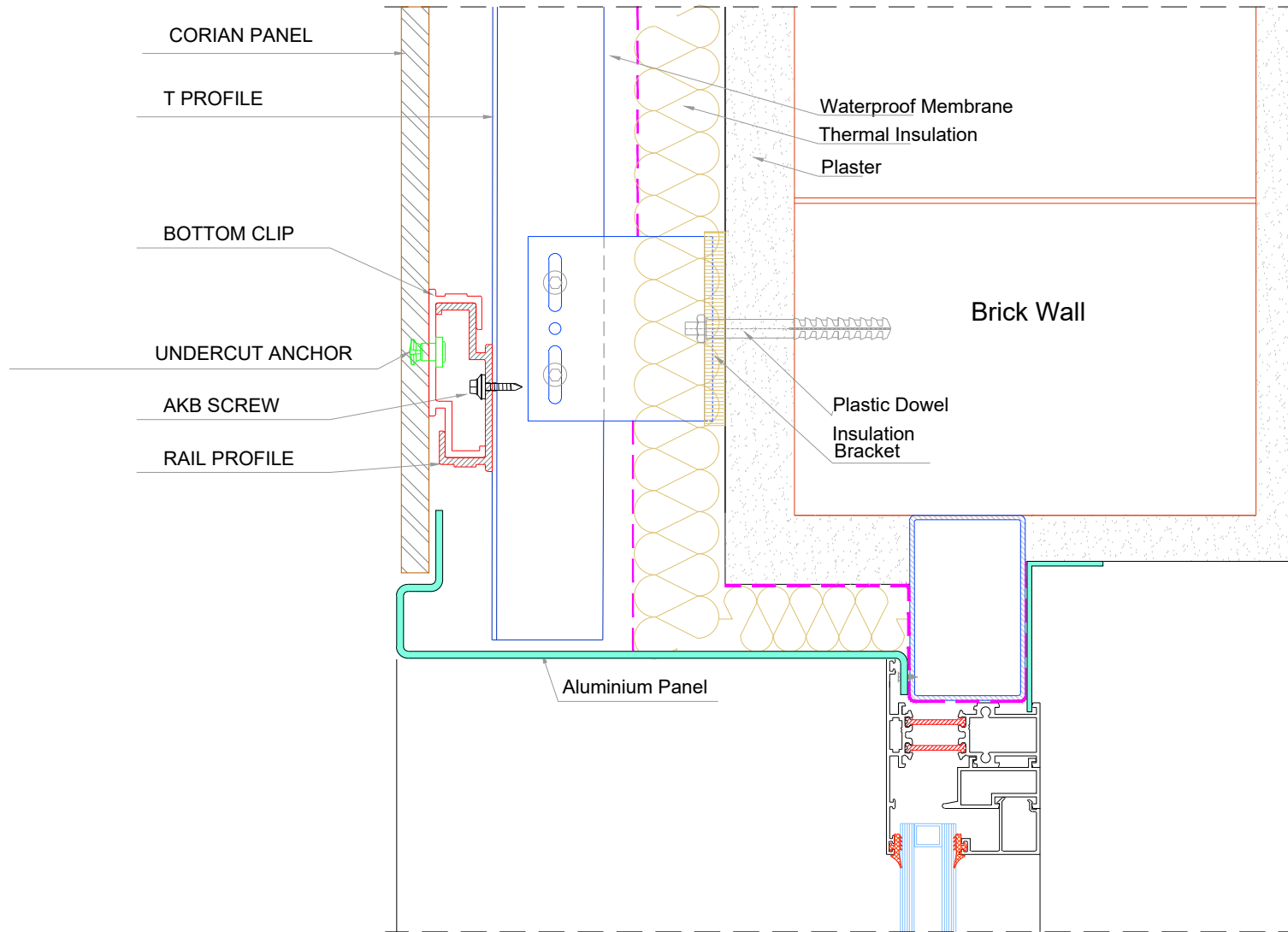


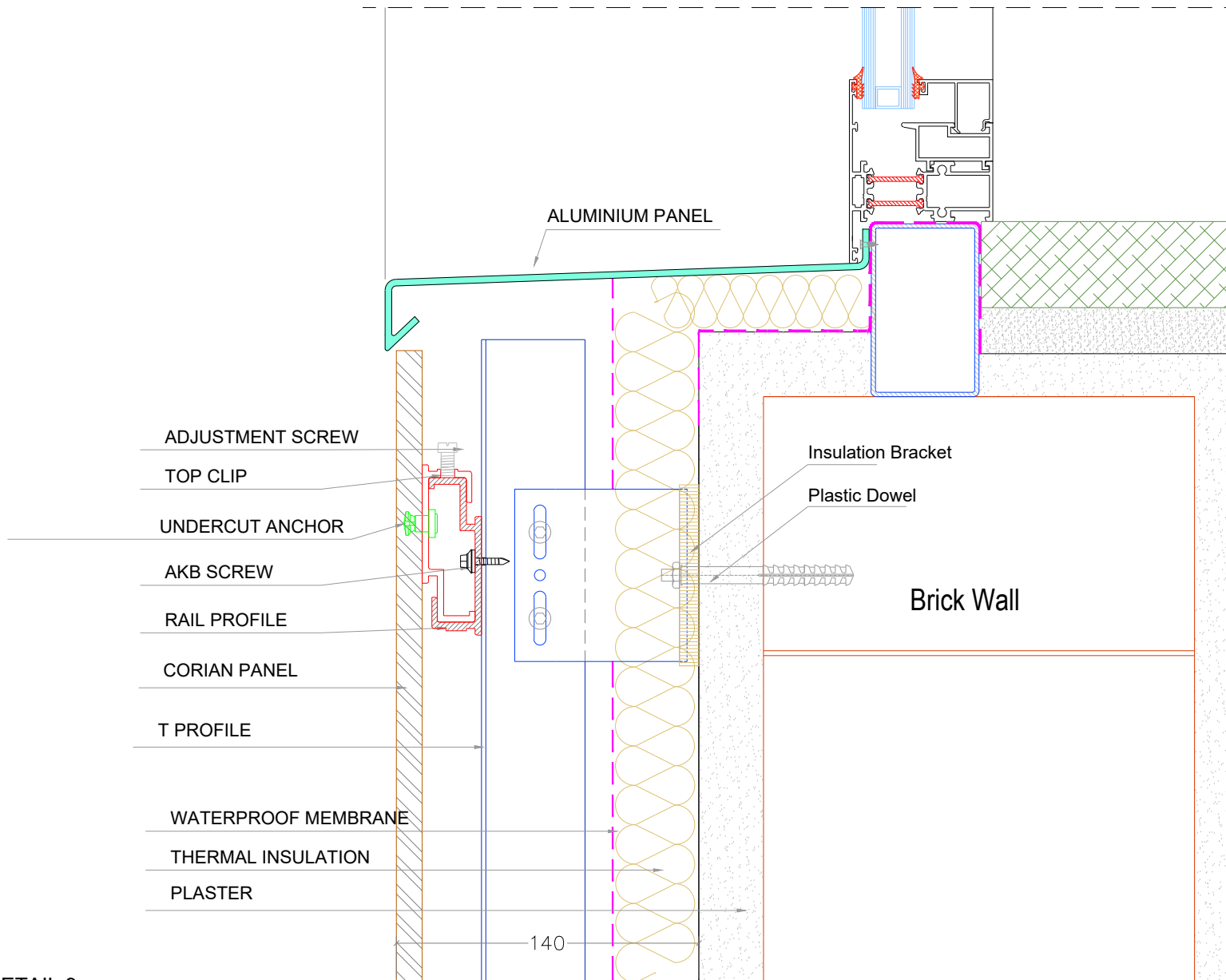
DETAIL 4



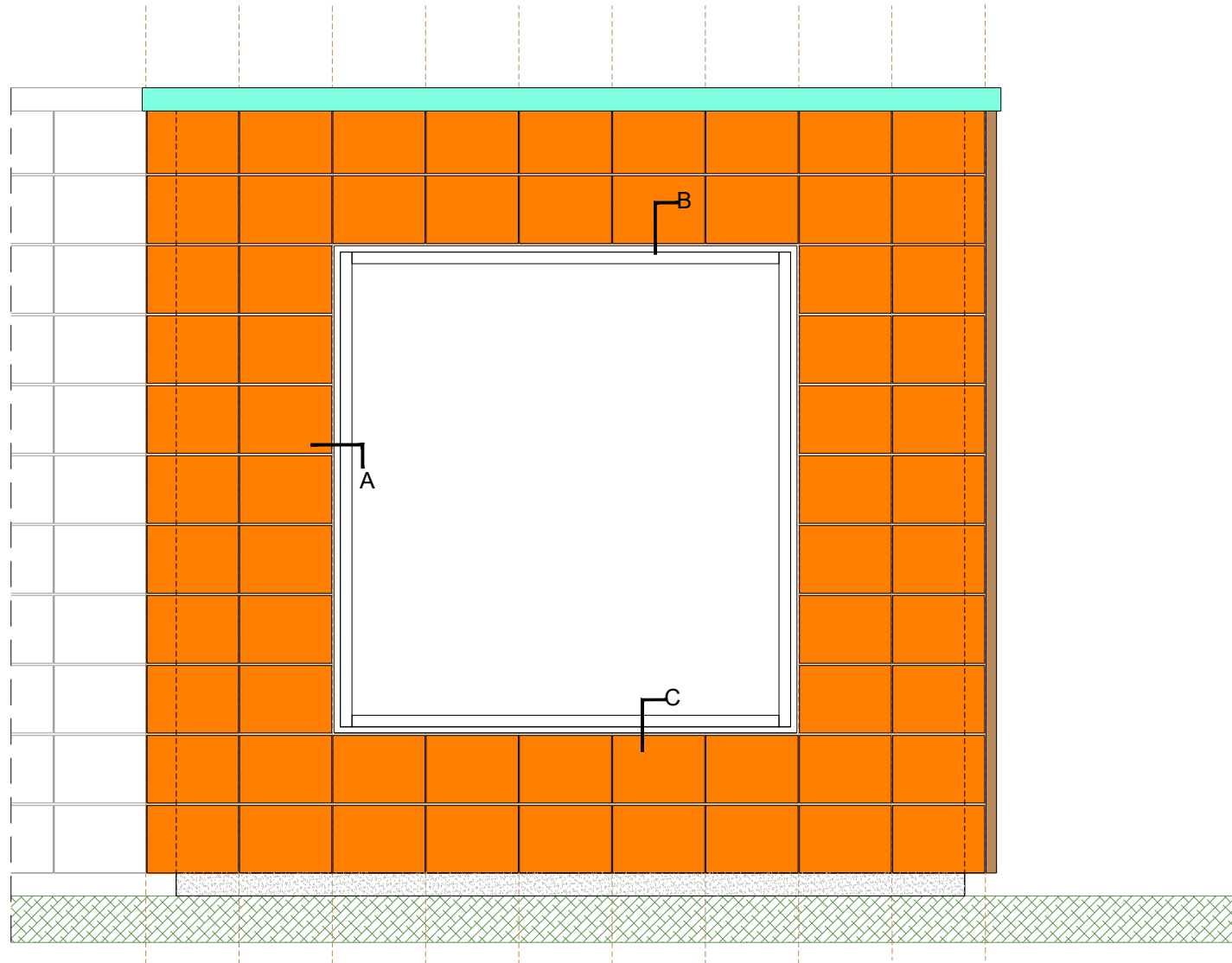
DETAIL 5

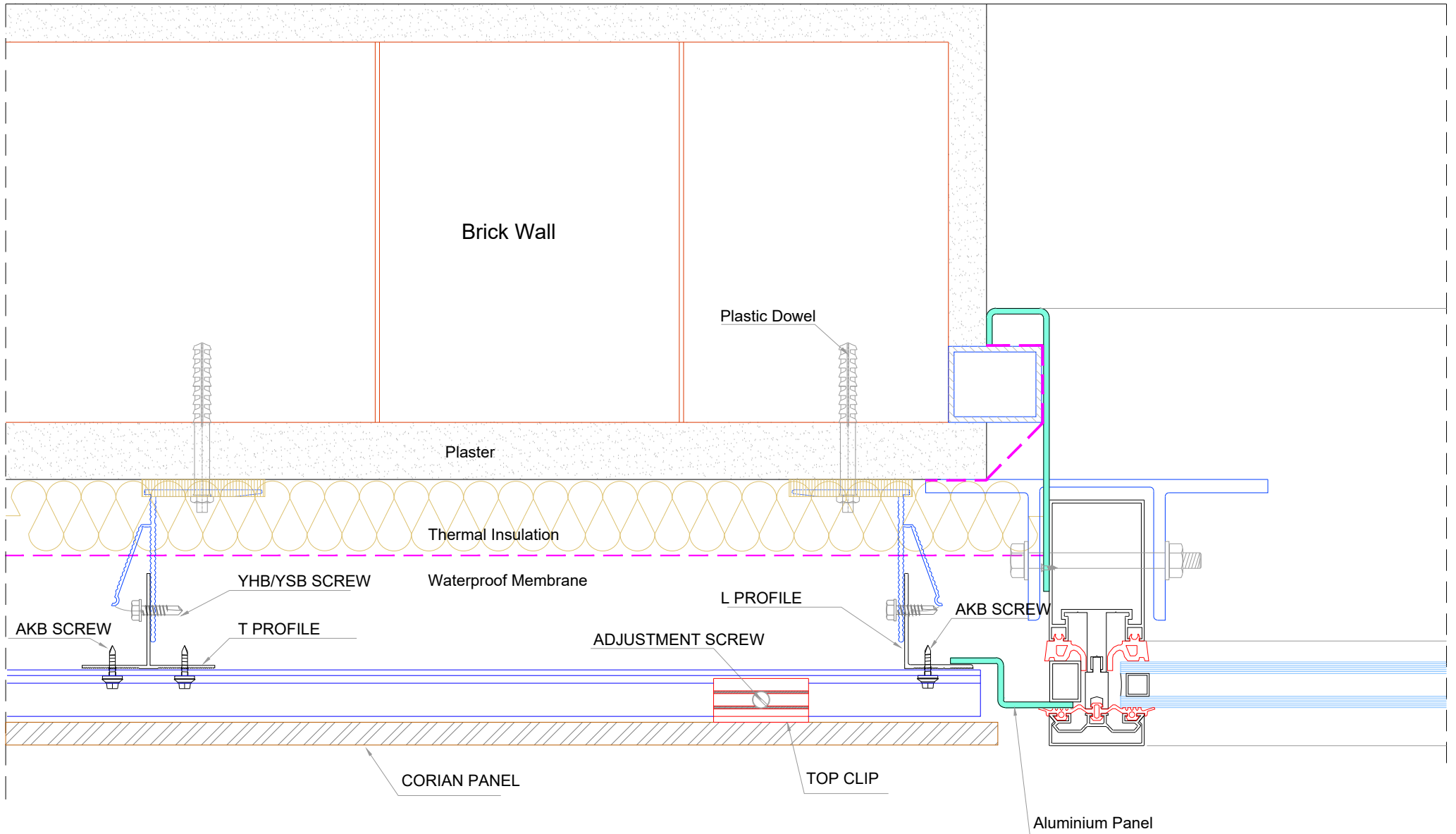




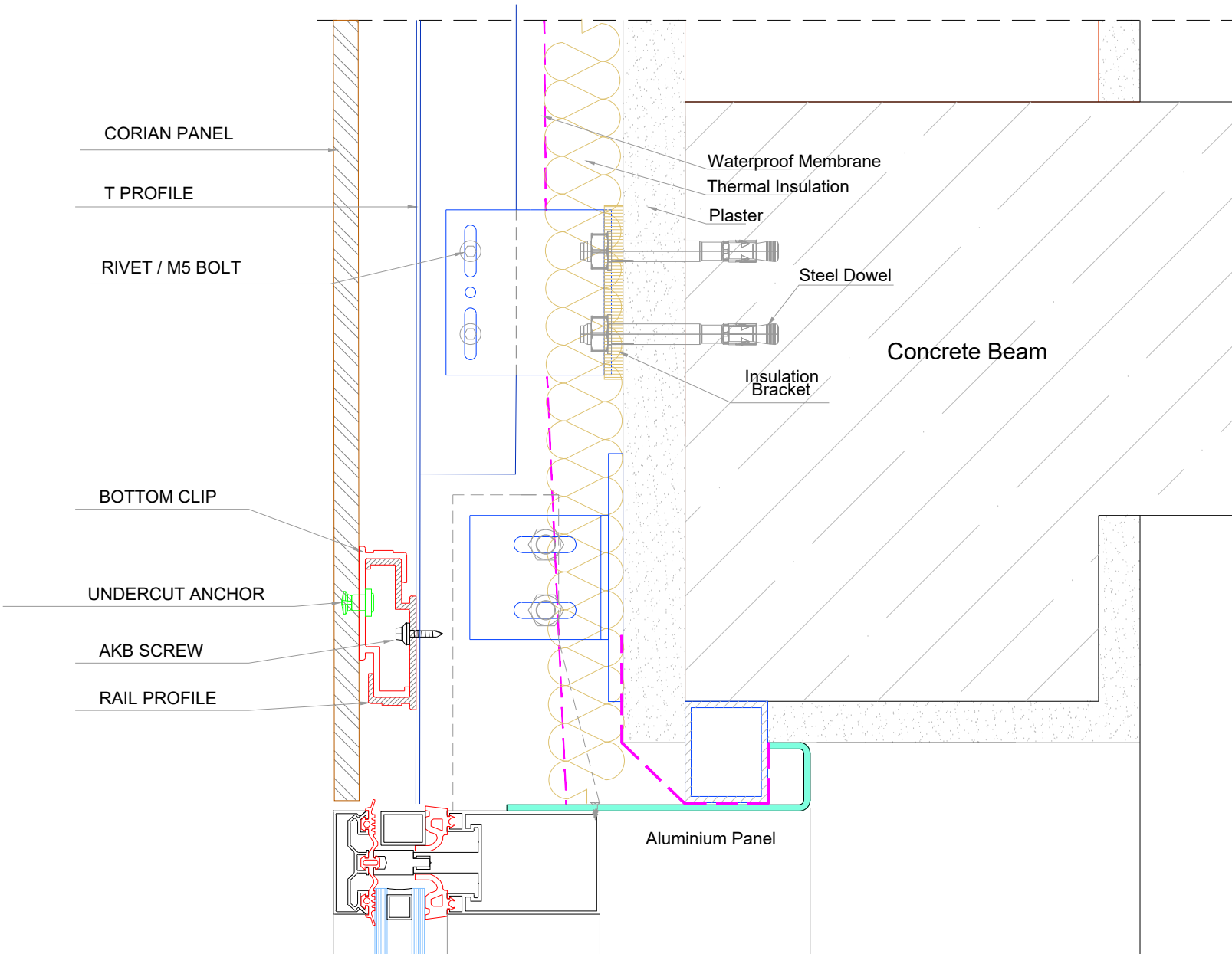


DETAIL 9

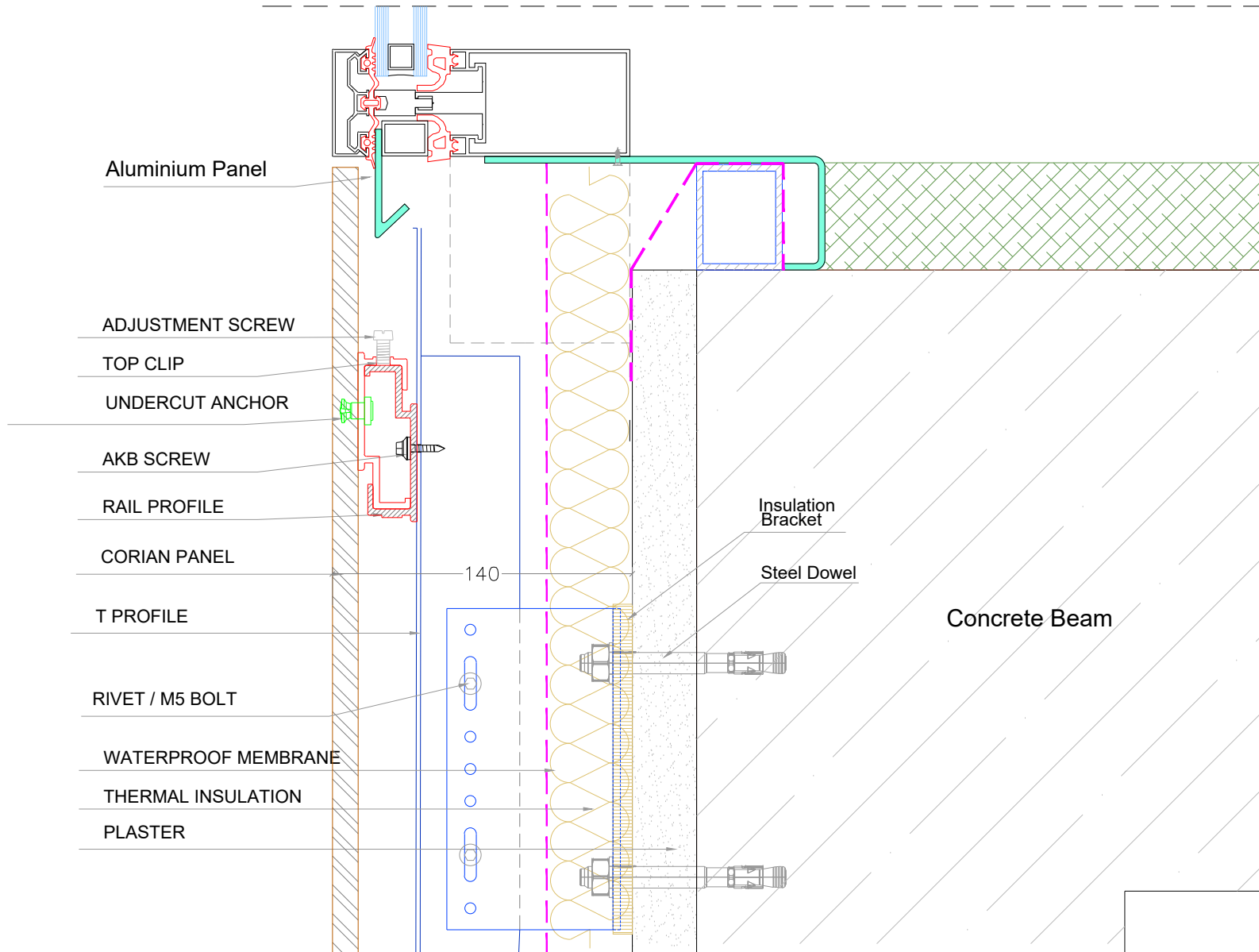




DETAIL A



DETAIL B



DETAIL C